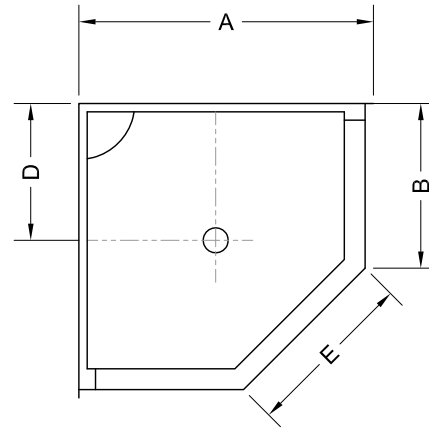
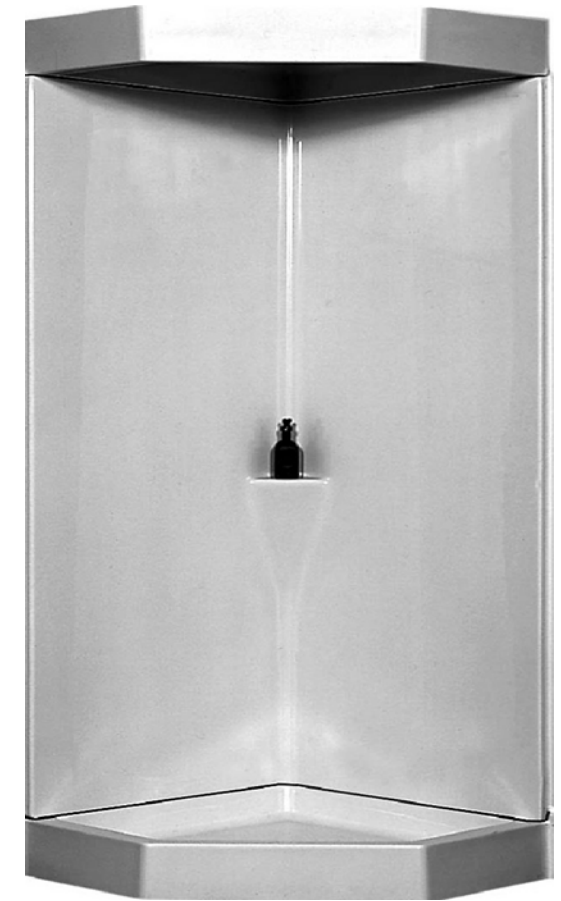


FRONT VIEW



TOP VIEW



V3838S

| | METRIC | IMPERIAL |
|---|----------|----------|
| A | 940(mm) | 37" |
| B | 445(mm) | 17 1/2" |
| C | 2007(mm) | 79" |
| D | 432(mm) | 17" |
| E | 648(mm) | 25 1/2" |
| F | 152(mm) | 6" |

NOTE:

DOOR OPENING: 16" x 24 3/4" x 16"
 407mm x 629mm x 407mm
 APPROXIMATE UNIT WEIGHT: 79 lbs (35.9 kg)

STANDARD FEATURES:

- SEAMLESS ONE-PIECE CONSTRUCTION
- REINFORCED FIBERGLASS CONSTRUCTION WITH WHITE GELCOATED SURFACE
- HONEYCOMB CORE REINFORCED FLOOR
- SLIP RESISTANCE FLOOR
- SELF DRAINING SOAP/SHAMPOO LEDGES

OPTIONS:

- () SHOWER DOME
- () COLOUR SPECIFY: _____
- () STAINLESS STEEL GRAB BAR
- 18" - QTY: _____
- 24" - QTY: _____
- 30" - QTY: _____

ALL VENCO UNITS ARE CSA CERTIFIED

STRUCTURAL COMPOSITE TECHNOLOGIES LTD. RESERVES PROPRIETARY RIGHTS ON THIS DRAWING OR ANY PART OF THE INFORMATION CONTAINED THEREON. THIS DRAWING SHALL BE CONSIDERED CONFIDENTIAL MATERIAL AND IS NOT TO BE USED FOR COMPETITIVE BIDDING NOR FOR USE WITH ANY PROCUREMENTS OTHER THAN FROM STRUCTURAL COMPOSITE TECHNOLOGIES LTD.

| | | |
|----------|--|------|
| 3 | | |
| 2 | | |
| 1 | | |
| 0 | | |
| REVISION | | DATE |

STRUCTURAL
 Composite Technologies Ltd.
 Fibreglass Fabricator
 www.structuralcomposite.com
 Winnipeg, Canada
 Ph. 204 668 9320

VENCO
 DESIGNED FOR VALUE, ENGINEERED TO LAST

SHOWER STALL
V3838S

| | | |
|----------------------|--------------------|--------|
| DATE: SEPTEMBER 2016 | DRAWING NO. V3838S | REV. 0 |
|----------------------|--------------------|--------|